

- Draw front, top, left-side views of the given objects based on 1st angle projection system.
- Construct the given table at the bottom of each drawing
- Use Times New Roman font with font size of 5.
- Align, bold, and italicize the text as shown
- Visible lines' thickness must be 0.50 and drawn as white
- Center lines' thickness must be 0.25 and drawn as yellow
- Hidden lines' thickness must be 0.35 and drawn as magenta

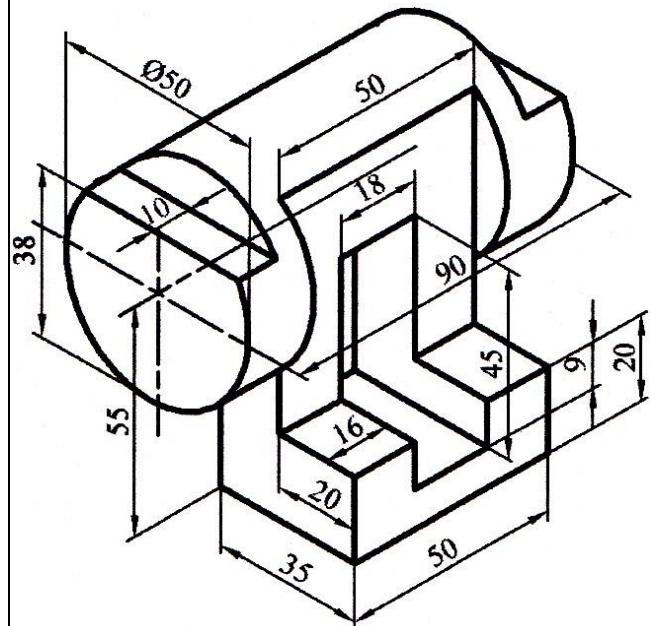
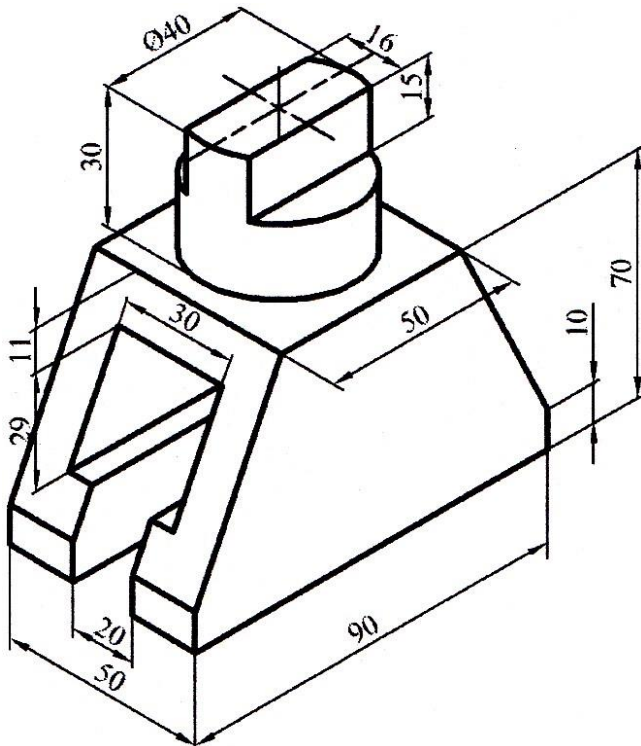
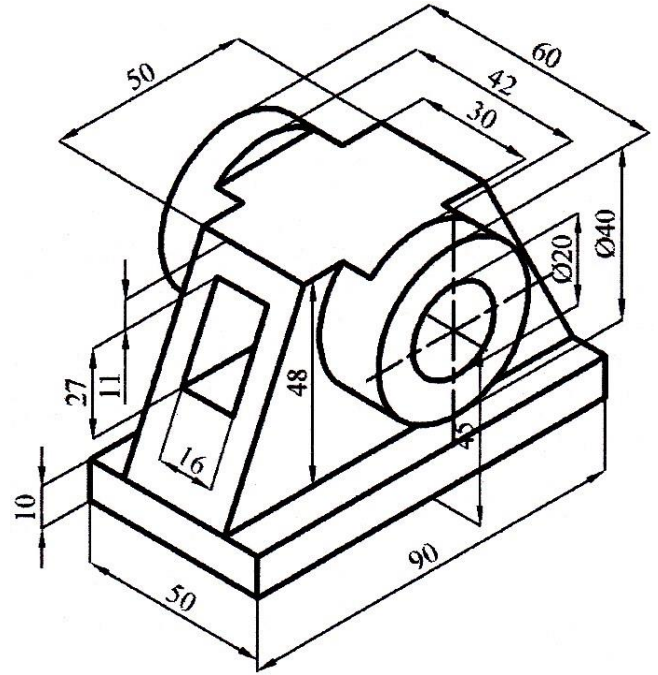
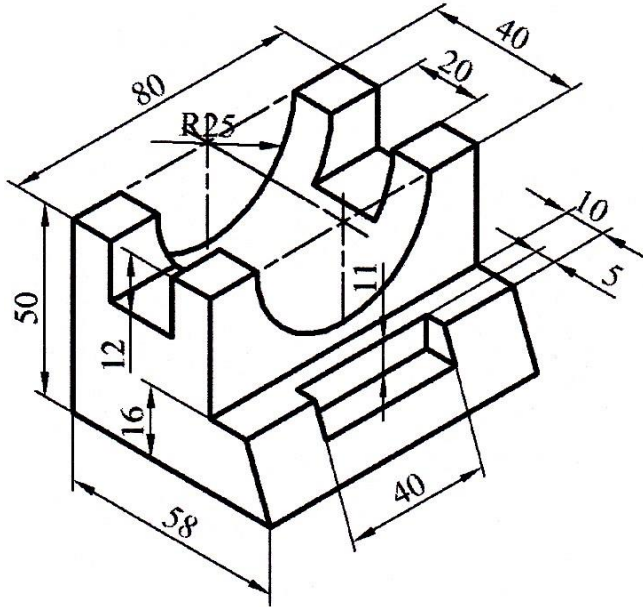
Mechanical Engineering Department
University of Gaziantep


Course: Engineering Drawing I

CW: 4

Drawn by: Your surname & name

Date: Date of your drawing



DRAWN BY		ME 113 – ENGINEERING DRAWING I	DRAWING NO	CW-4
CONTROL		ORTHOGRAPHIC PROJECTION	 MECHANICAL ENGINEERING DEPARTMENT	
DATE				
SCALE				